

# Factory Guidance

GLOBAL Co., Ltd.

# Corporate Data

- ▶ Established
  - May 1982
- ▶ President
  - Takehiko Ariizumi (Chairman)
  - Katsuhiko Ariizumi (President)
- ▶ Headquarters
  - 1160 Asari Chuo  
Yamanashi 400-1514 Japan
  - TEL +81-55-269-3311
  - FAX +81-55-269-2322
  - URL : [www.global-j.com](http://www.global-j.com)
  - e-mail : [info@global-j.com](mailto:info@global-j.com)
- ▶ Employees
  - 70 employees
- ▶ Capital
  - 100 million yen



HEAD OFFICE

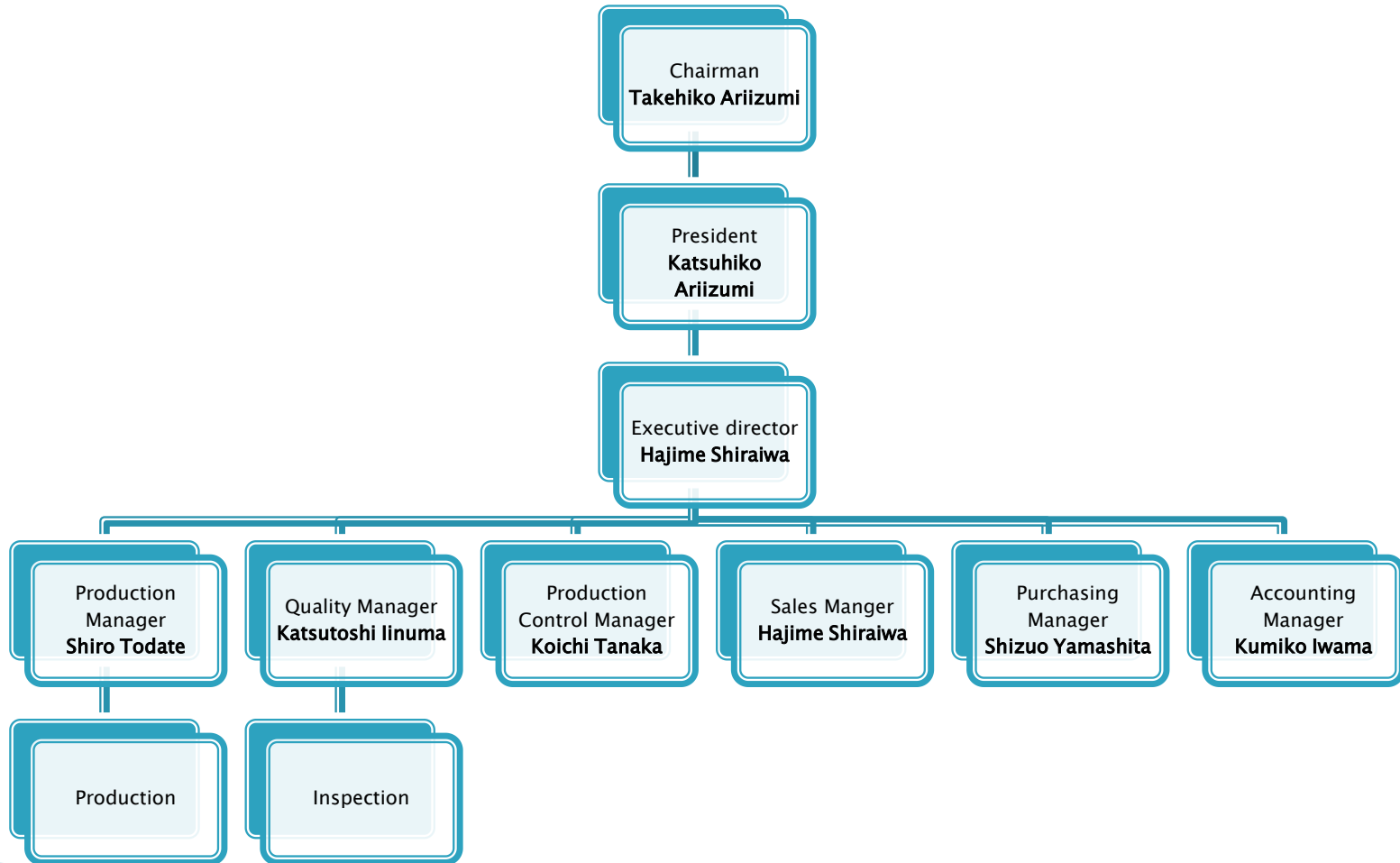


NIIGATA OFFICE

# History of GLOBAL



# The Organaization



# Products

- ▶ **Crystal Blank**
  - Round
  - SMD
  - Round Inverted Mesa
  - SMD Inverted Mesa
- ▶ **Finished Products**
  - UM-1, UM-5, HC45U & etc.
  - (Using Inverted Mesa Blanks)
  - High Frequency Product for Filter use
- ▶ **Other**
  - Abrasive Powder
  - Lapping Oil
  - Lapping Carrier

# Product Detail (Round Blank)

## Diameter

- 3.50φ to 20.00φ

## Orientation Flat

- Single or Double Flatness

## Angle

- $\pm 7.5^{\circ}/15^{\circ}/30^{\circ}/1^{\circ}\sim$
- EFG Angle Sorting is possible

## Frequency(PP)

- 800KHz to 75MHz
- Frequency Sorting is Possible as requirement

## Finish

- $1\mu\text{m}\sim 3\mu\text{m}$  Lap Finish
- Full Polish / Semi Polish / Chemical Etching

## Contour

- Bevel/Bi-Convex/Plano Convex



# Product Detail (SMD)

## Dimension TYPE

- Customer's Requirements
- 2016/2025 / 3225/5032 / 7050

## Conner Cut

- Conner Cuts are possible

## Angle

- $\pm 7.5^\circ / 15^\circ / 30^\circ / 1^\circ \sim$
- EFG Angle Sorting is possible

## Frequency(PP)

- 800KHz to 75MHz
- Frequency Sorting is Possible as requirement

## Finish

- $1\mu\text{m} \sim 3\mu\text{m}$  Lap Finish
- Full Polish / Semi Polish / Chemical Etching

## Contour

- Bevel/Bi-Convex/Plano Convex



# Product Detail (Inverted Mesa)

## Dimension

- ROUND : 5.08 $\phi$ /4.50 $\phi$  (Our Standard)
- SMD : 5.00X2.98/5.00X2.50(Our Standard)

## Flatness Conner Cut

- Flatness and Conner Cuts are possible as customers requirements

## Angle

- $\pm 7.5^{\circ}/15^{\circ}/30^{\circ}/1^{\circ}\sim$
- EFG Angle Sorting is possible

## Frequency(PP)

- 50MHz to 3600MHz
- Frequency Sorting is Possible as requirement

## Finish

- Full Polish (Ring)
- Chemical Etching (Mesa Area)

## Material

- Low Etch Channel Density (10/cm<sup>2</sup>)
- Q Value : Minimum 2.4million



# Crystal Units

## HFF

High Frequency Fundamental

- Products which are using Inverted Mesa blanks.
- Cope up to 250 MHz in fundamental oscillation mode.

## HFF

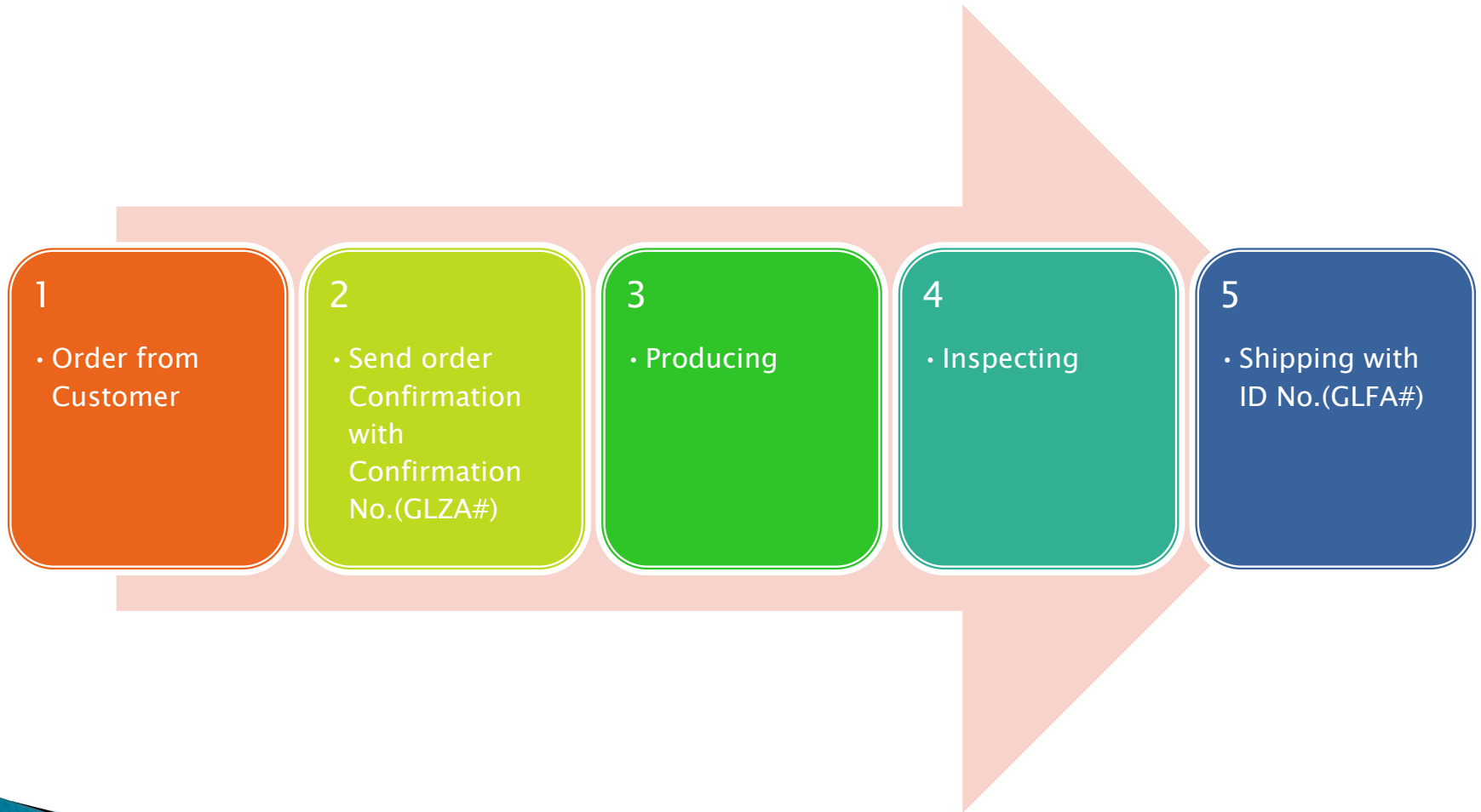
3rd O.T.

- Cope up to 250 MHz

## Lead Type

- UM-1, UM-5
- HC45U & etc.

# Controlling Systems



# Customers

